

## 400 Line 400lt Line Refrigerator 1 Glass Door, 0+10°C Digital, 60Hz-Marine

ITEM # \_\_\_\_\_

MODEL # \_\_\_\_\_

NAME # \_\_\_\_\_

SIS # \_\_\_\_\_

AIA # \_\_\_\_\_



730103 (R04PVG46)

1-glass door refrigerator 400lt,  
0+10°C, digital, 60Hz (marine)

### Short Form Specification

Item No. \_\_\_\_\_

Exterior in stainless steel. Interior in white High Impact Polystyrene with rounded corners and 45mm thick insulation. Right hinged glass door with lock, reversible on-site. Built-in refrigeration unit; ventilated operating mode; automatic defrost and evaporation of defrost water; digital control and temperature display; internal lighting. For ambient temperatures up to 32 ° C. HCFC, CFC and HFC free insulation and R134a refrigerant gas. Supplied with n. 4 grids mm600x400, PE coated.

### Main Features

- Digital control panel allowing the easy and precise setting and control of the internal temperature.
- Shelf runners are thermoformed and are incorporated in the internal structure to be easily cleanable.
- Suitable for use in ambient temperatures of up to 32 ° C.
- Very quiet operation.
- Whole interior cell with rounded corners is white thermoformed polystyrene, which is impact resistant.
- No joints whatsoever to eliminate dirt traps.
- Simple refrigeration system easily accessible from the rear of the units.
- Fan assisted cooling for even temperature distribution.
- Model equipped with roll-bond plate that has a plate installed in the internal backside of the unit equipped with a special thermostat to avoid ice formation.
- Model requires only 1 phase 220V-60Hz supply and can be plugged straight into an existing power socket.
- Connectivity ready for real time access to connected appliances from remote and data monitoring (requires optional accessory).

### Construction

- Developed and produced in ISO 9001 and ISO 14001 certified factory.
- All models in range are finished in top quality materials to aid durability.

### Sustainability

- CFC and HCFC free (ecological refrigerant type: R134a, - gas in foam: cyclopentane).

### Included Accessories

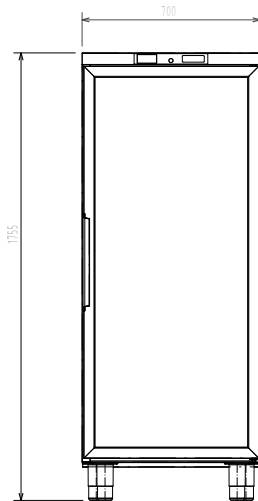
- 2 of Pair of white grids for 400L refrigerators PNC 880292

### Optional Accessories

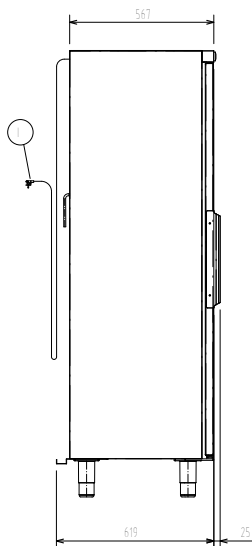
- Pair of white grids for 400L refrigerators PNC 880292
- PVC container with false bottom for 400L PNC 881072

APPROVAL: \_\_\_\_\_

**Front**

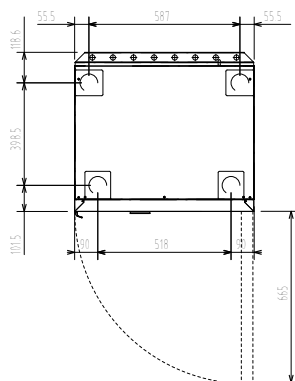


**Side**



EI = Electrical inlet (power)

**Top**



### Electric

|                        |                   |                      |
|------------------------|-------------------|----------------------|
| Supply voltage:        | 730103 (R04PVG46) | 220-230 V/1 ph/60 Hz |
| Electrical power max.: |                   | 0.18 kW              |

### Key Information:

|   |                 |
|---|-----------------|
| Gross capacity:                             | 400 lt          |
| Door hinges:                                | Right Side      |
| External dimensions, Width:                 | 700 mm          |
| External dimensions, Depth with Doors Open: | 1310 mm         |
| External dimensions, Height:                | 1755 mm         |
| Number and type of grids (included):        | 4 - 600x400     |
| Type of external material:                  | Stainless Steel |
| External door material:                     | Glass           |
| Internal Light                              | X               |

### Refrigeration Data

|   |                 |
|---|-----------------|
| Control type:                                   | Digital         |
| Compressor power:                               | 1/5 hp          |
| Refrigeration power at evaporation temperature: | -10 °C          |
| Min/Max internal humidity:                      | 70%/85%         |
| Operating temperature min.:                     | 0 °C            |
| Operating temperature max.:                     | 10 °C           |
| Operating mode:                                 | Ventilated      |
| Cooling unit:                                   | Built-In        |
| Defrost type:                                   | Automatic (air) |

### Sustainability

|                      |        |
|----------------------|--------|
| Noise level:         | 55 dBA |
| Refrigerant type:    | R134a  |
| Refrigeration power: | 352 W  |
| Refrigerant weight:  | 210 g  |